

TB DIAH

TUBERCULOSIS DATA, IMPACT ASSESSMENT
AND COMMUNICATIONS HUB

Introduction to the TB Data Hub

October 13, 2022



Today's Presenters



DR. STEPHANIE MULLEN

TB DIAH Project Director



DANIEL COTHRAN

Senior Technical Advisor
and Data Hub Development Lead

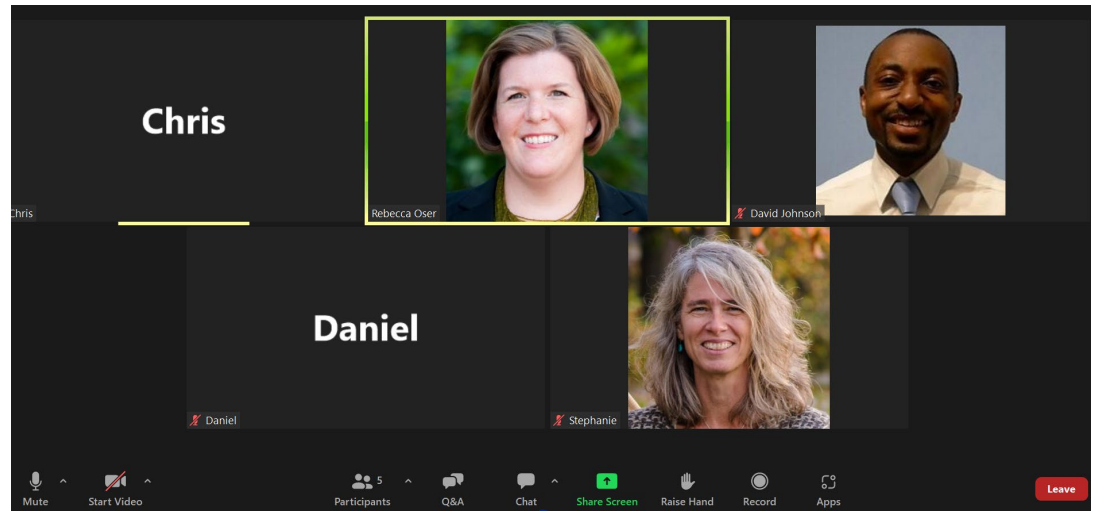
Today's Objectives

1. Introduce the Data Hub and its features
2. Answer user questions about the Data Hub and how to use it

Today's Agenda

1. Welcome & introductions
2. TB DIAH & the PBMEF
3. Data Hub overview
4. Questions & answers
5. Wrap up

Housekeeping

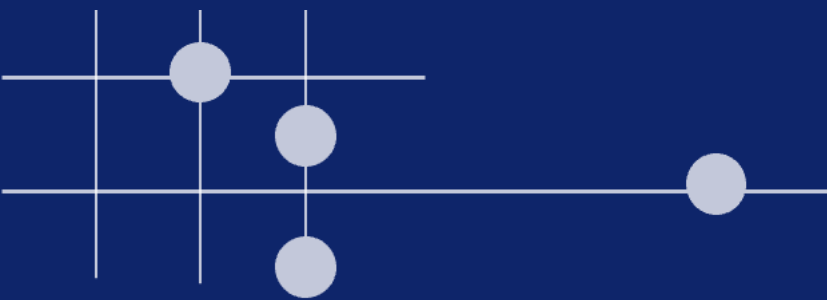


Please use the **Q&A** for all questions.

Please **tell us who you are and where you're from** in the chat.

Questions will be addressed at the end of the webinar.

The webinar is being recorded and a link to the recording and presentation will be shared with all attendees and registrants tomorrow by a Zoom link and email.



Overview

TB DIAH & the PBMEF

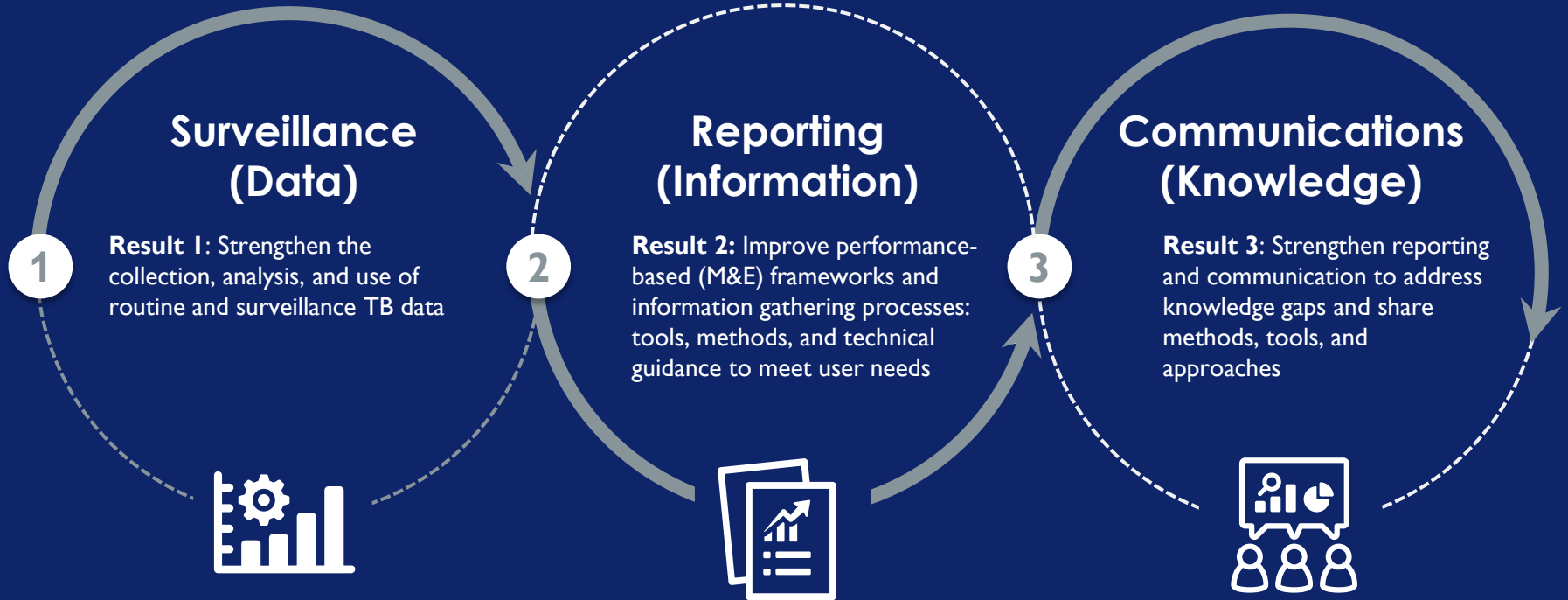
TB DIAH

TUBERCULOSIS DATA, IMPACT ASSESSMENT
AND COMMUNICATIONS HUB

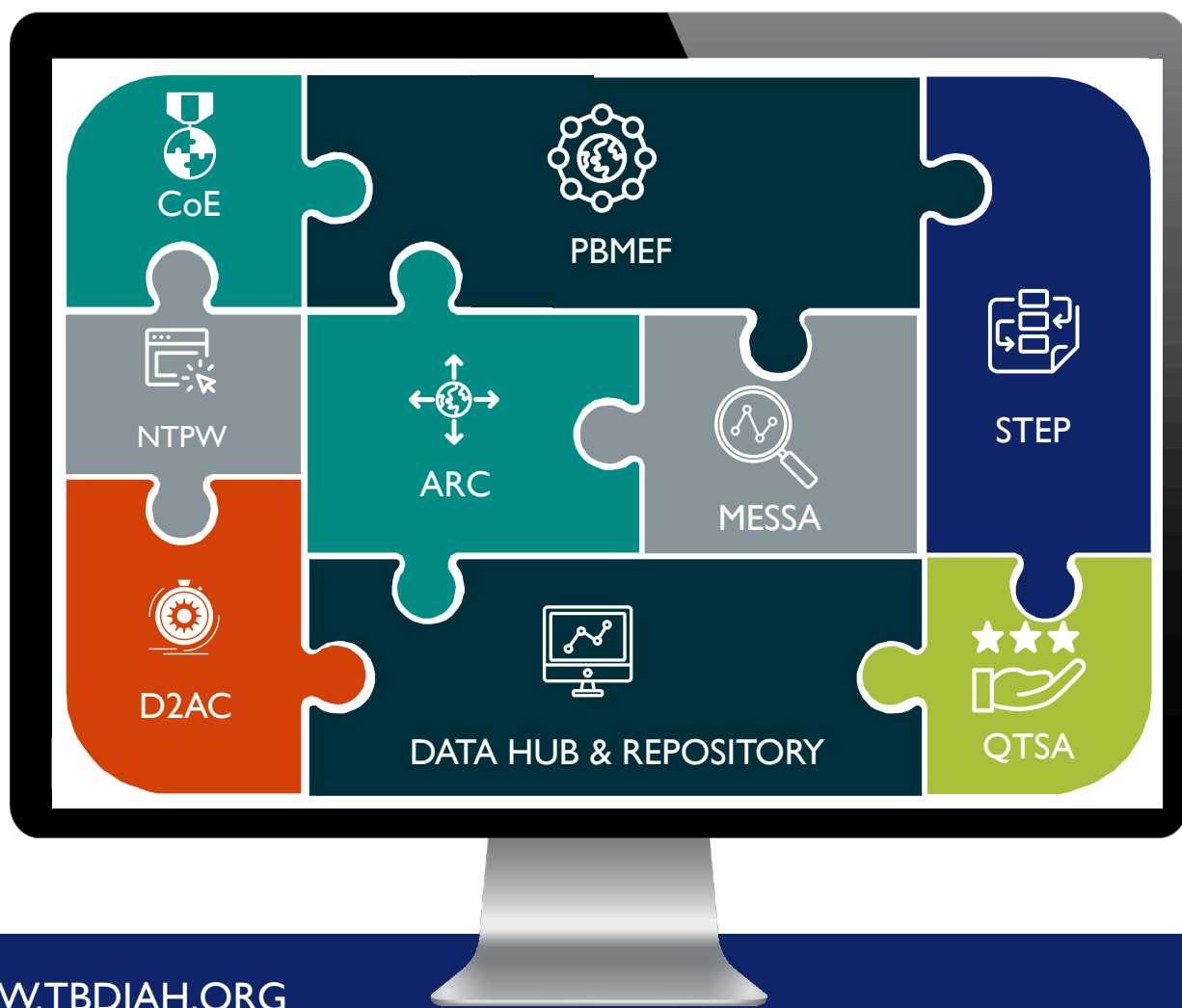
- Part of the Global Accelerator to End TB
- Global, five-year (2018–2023) associate award, \$36M cooperative agreement
- Small team of M&E and TB experts working to clarify TB data in way that helps USAID monitor its TB investments in its TB priority countries
- Helps countries use data to share their story



What Does Our Work Do?

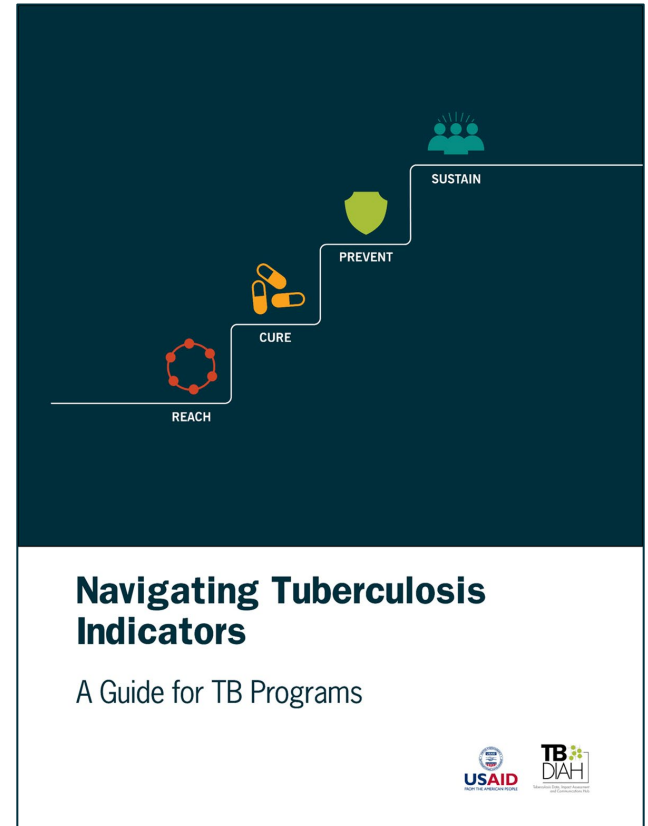


Together, TB DIAH's interconnected work streams provide a holistic view of a country's TB monitoring, evaluation, and surveillance.



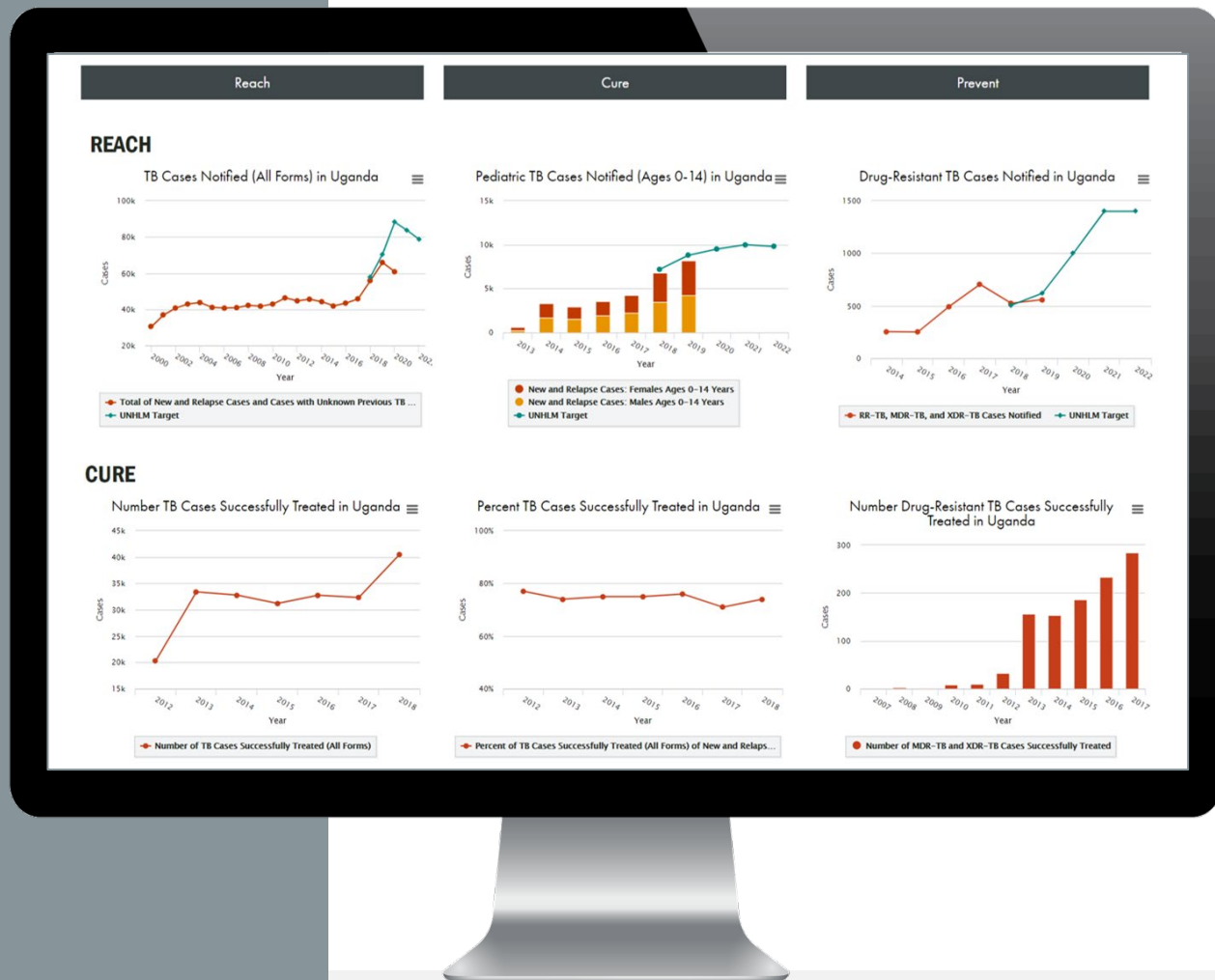
Performance-based M&E Framework (PBMEF)

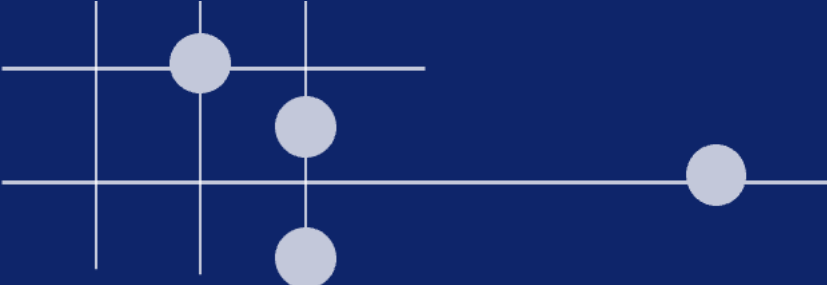
- Cornerstone of USAID's efforts to ensure effective accountability of investments in TB at global, regional, and country levels and accelerate progress to end the TB epidemic.
- PBMEF provides:
 - ✓ A set of standardized indicators to measure essential TB program outputs and outcomes
 - ✓ Details on the performance of TB programs in specific technical areas (e.g., diagnosis, treatment, TB/HIV, private sector, etc.)
 - ✓ Treatment cascades and patient pathways that are critical to understanding where gaps are and where efforts need to be strengthened



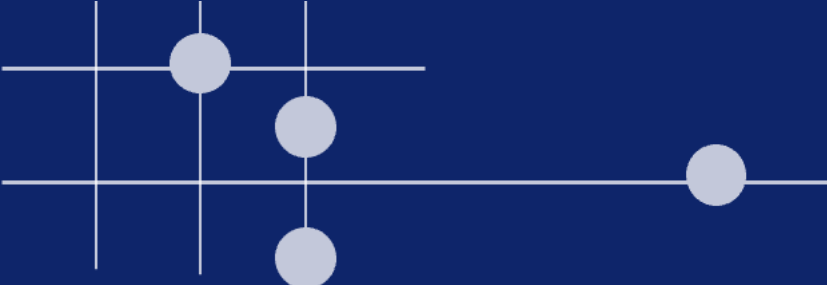
Data Hub

<https://hub.tbdiah.org>

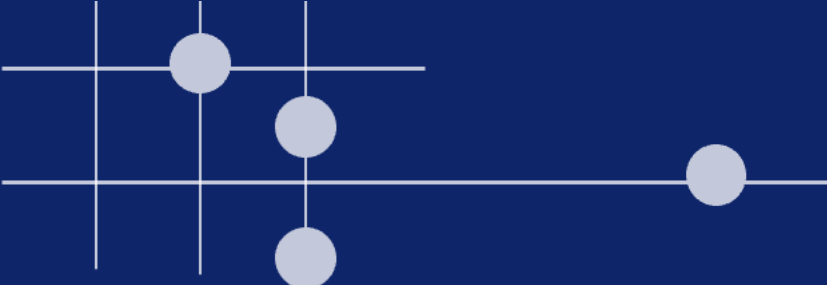




Data Hub Overview



Q&A



Wrap Up

Key Links

Data Hub



<http://hub.tbдия.org>

TBDIAH.org



<https://www.tbдия.org>

PBMEF



<https://www.tbдия.org/pbmf>

More Questions?



Sevim Ahmedov, TB DIAH AOR
sahmedov@usaid.gov



Stephanie Mullen, TB DIAH Project Director
stephanie_mullen@jsi.com



This presentation was produced with the support of the United States Agency for International Development (USAID) under the terms of the TB Data, Impact Assessment and Communications Hub (TB DIAH) Associate Award No. 7200AA18LA00007.

TB DIAH is implemented by the University of North Carolina at Chapel Hill, in partnership with John Snow, Inc. Views expressed are not necessarily those of USAID or the United States government.

